

# Registry of Ex Military Land Rovers

Copyright of this document is retained by the original authors. Some parts may have been superseded or changed since that time.

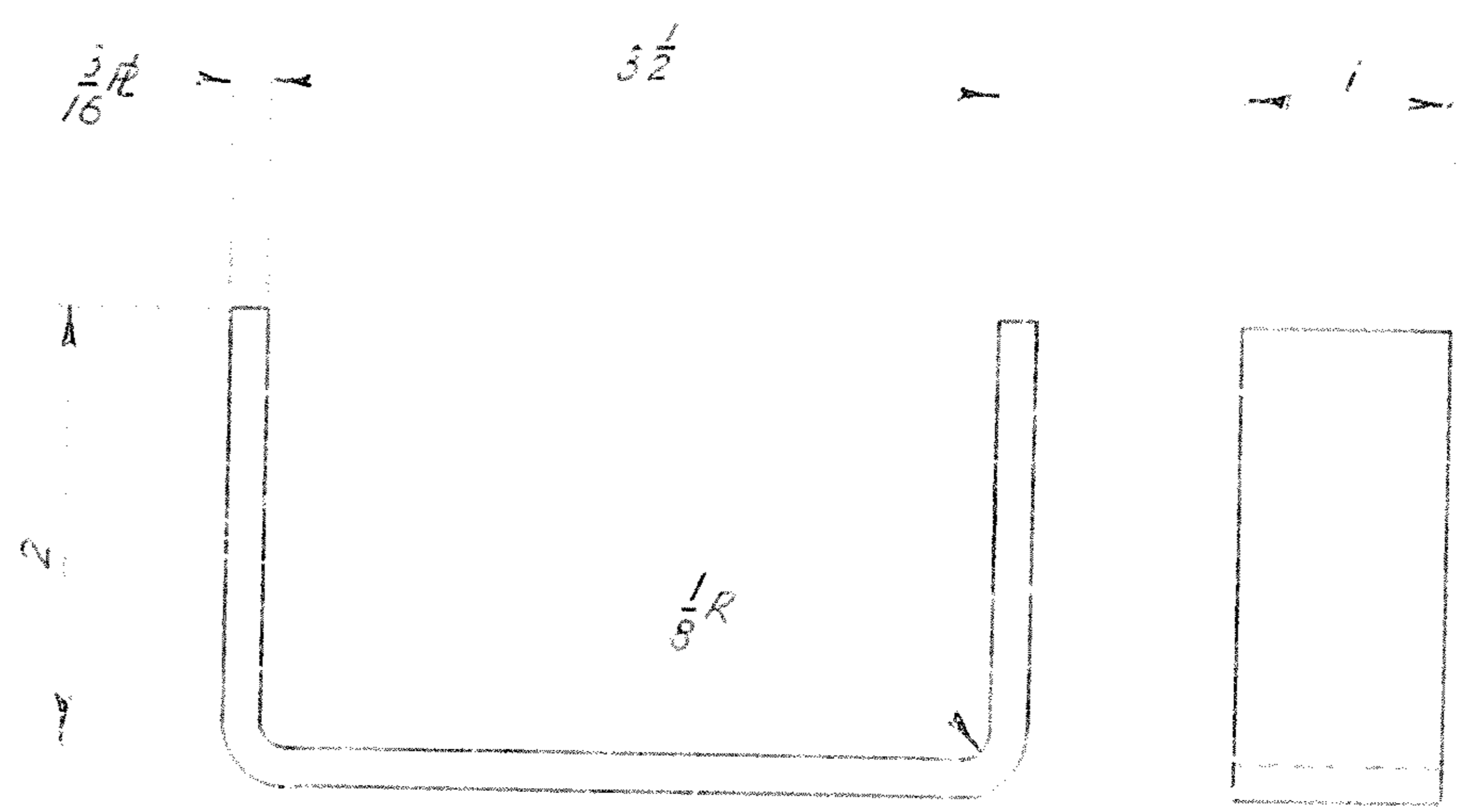
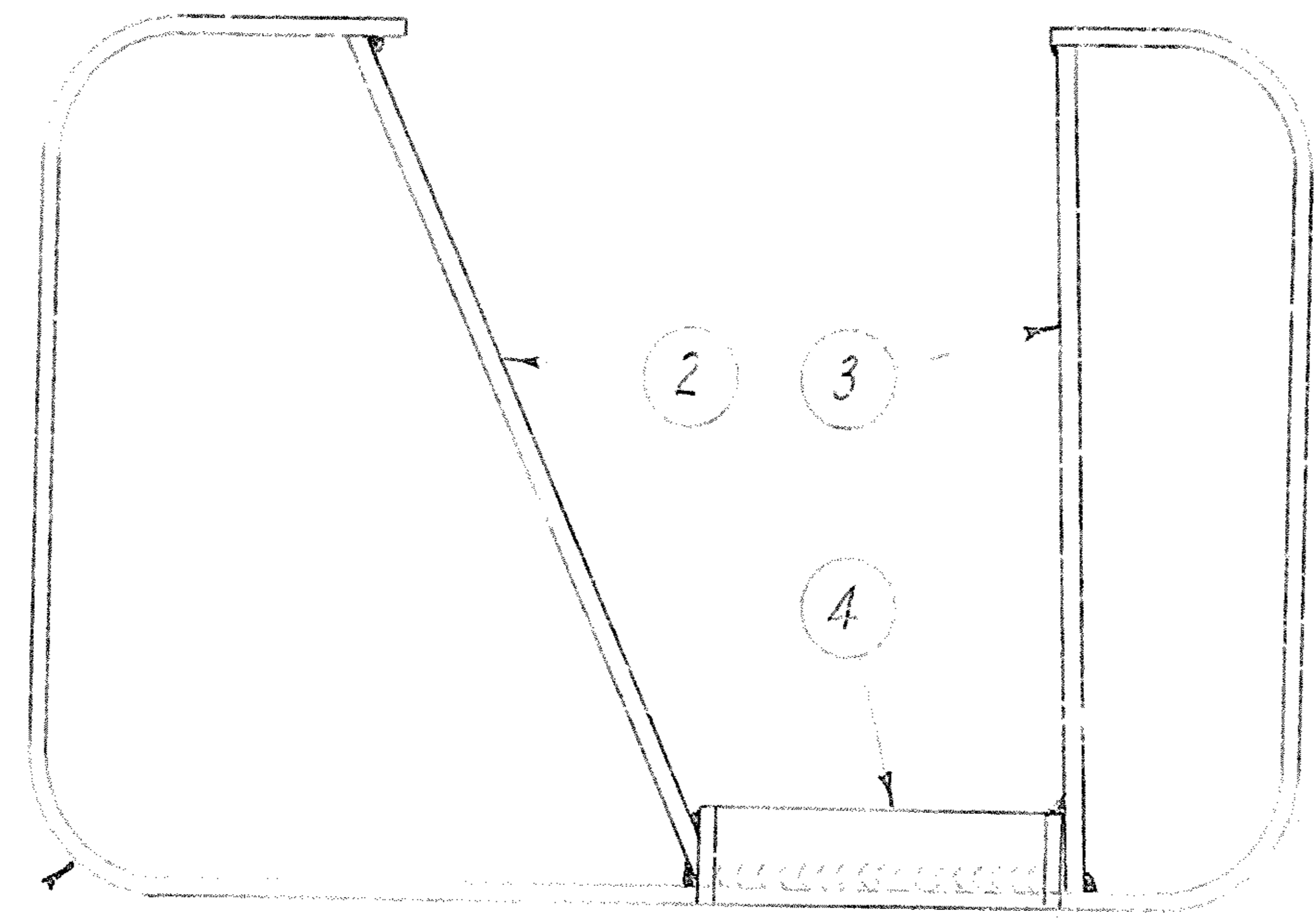
This document has been download from the Registry of Ex Military Land Rovers at <http://www.remlr.com> . All files available from this site are free of charge.

If you have paid for this document please report where you purchased it from to the Registry of Ex Military Land Rovers Inc at [webmaster@remlr.com](mailto:webmaster@remlr.com)



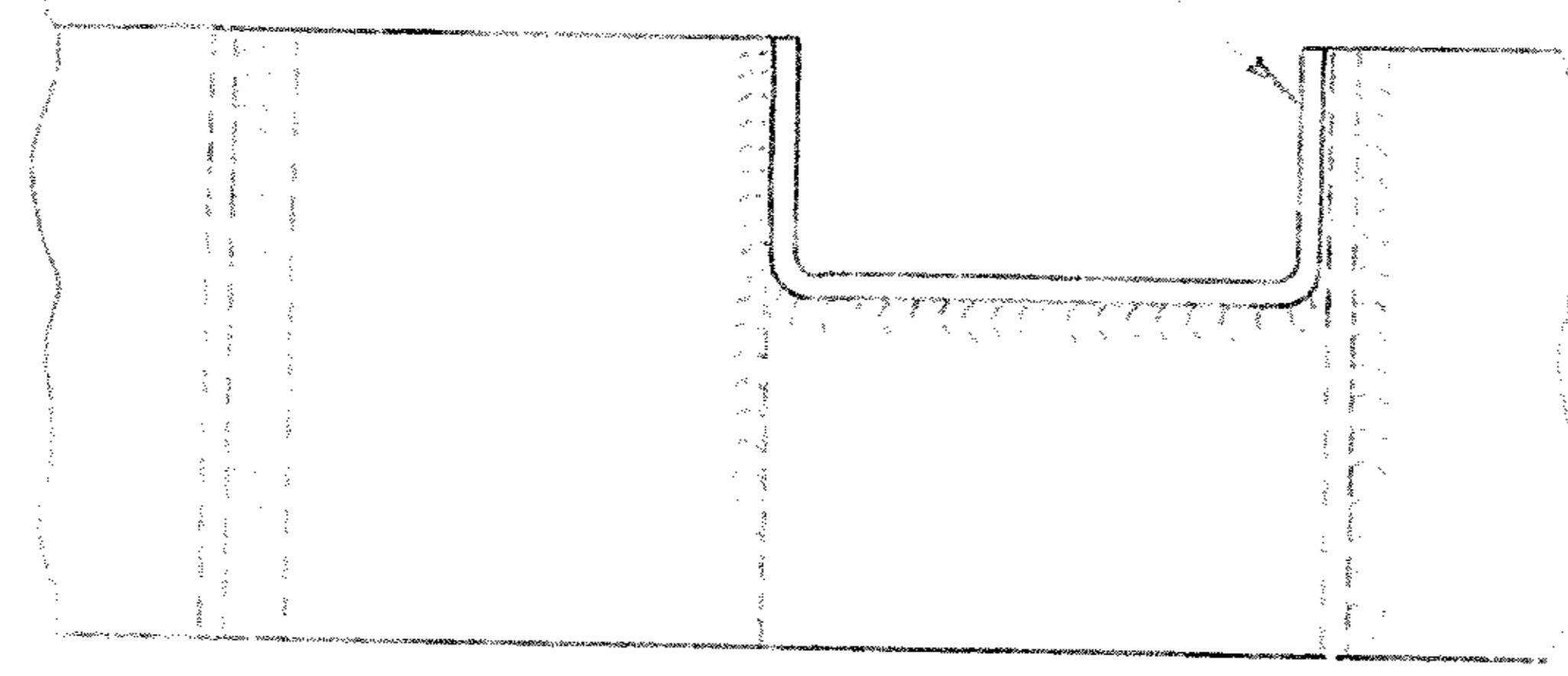
DRAWING No.  
ADE(V)5-41B  
USED ON

THIRD ANGLE PROJECTION  
DO NOT SCALE



DETAIL A  
SCALE 1 - 1/2

DETAIL A



\* ITEM N°1 TO CONFORM TO EXISTING DESIGN (REF RMC).  
3/16 CONTINUOUS FILLET WELD  
REMOVE ALL SHARP EDGES.

4	CHANNEL	1
3	WEB, 3/16 PLATE	AS REQ'D
2	WEB, 3/16 PLATE	AS REQ'D
* 1	BUMPERETTE	1

CONTRACTOR'S MATERIAL & FINISH CODE (IF REQUIRED)

PATTERN APPROVED FOR INTRODUCTION INTO THE AMP AND AUTHORIZED FOR PRODUCTION/PROCUREMENT  
LRC WILD Lt Col  
for MGO  
DATE 25 FEB 64

ITEM No.	DRAWING OR PART No.	DESCRIPTION	No. OFF
DRAWING PRACTICE IS TO DEF. (AUST.) 85		TOLERANCES UNLESS OTHERWISE STATED:— FRACTIONAL ± 1/16 DECIMAL ±	CATALOGUE No.
DIMENSIONS ARE IN INCHES			
SCALE	1/2	SEALED	E.O. 11652
DRAWN	D. WALSH	DESIGN APPROVAL	H. KOPPEL
CHECKED	G. GREGORY	MATERIAL SPECIFICATION & TREATMENT	STEEL, AS A33 CLASS D MAX. CARBON .26, Mn .30 ± .00
PROJ. ENG.	K. BOASE	DATE	25 FEB 64 for C.S.D.E.
<b>ARMY DESIGN ESTABLISHMENT, AUSTRALIAN MILITARY FORCES</b>			
ISSUE	1	DATE	25 FEB 64
C/A No.		APPROVAL	H. K.
TITLE		DRAWING No.	SHEET
BUMPERETTE, REAR, L.H. ASSY, LANDROVER.		ADE(V)5-41	B SIZE